

LX5000 Wireless DAS Module and Bluetooth® USB Dongle Setup Instructions



3700 Sagamore Parkway North
P.O. Box 5729 • Lafayette, IN 47903 USA
Tel: 765.423.1505 • 800.428.7545
Fax: 765.423.4111
E-mail: info@lafayetteinstrument.com
www.lafayetteinstrument.com

To be used with Kensington 33348 Bluetooth Dongle

LX5000 Wireless DAS Module and Bluetooth® USB Dongle

Table of Contents

Bluetooth USB Dongle and Serial Port Installation

Instructions:

Bluetooth USB Dongle Instructions* _____ 3

Serial Port Installation Instructions _____ 10

LX5000 Wireless DAS Module Installation Instructions ____ 12

Company Information and Ordering Instructions _____ 19

* The name Bluetooth is a registered trademark of the Bluetooth SIG.

** Screen shots may differ from version included on CD.

Bluetooth® USB Dongle and Serial Port installation instructions

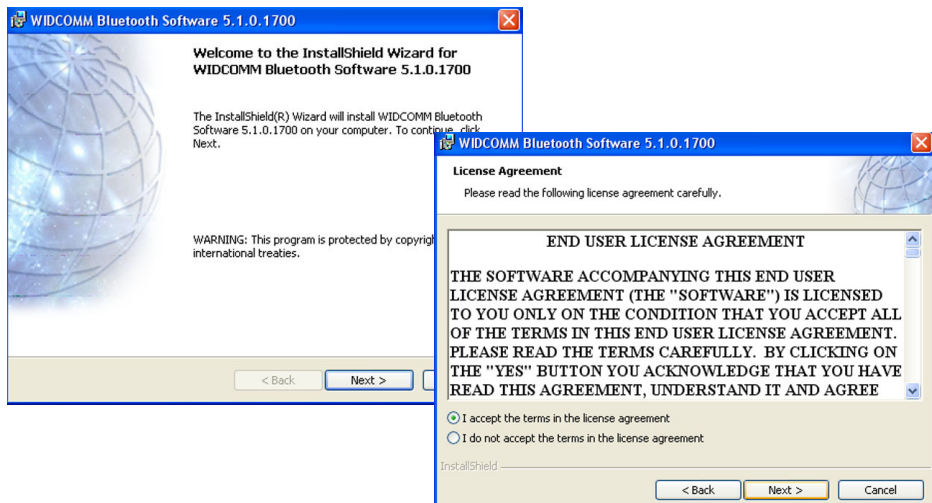
Bluetooth USB Dongle instructions:

1. Do not insert the Bluetooth USB Dongle into the USB port before the Bluetooth software has been installed.
2. Insert the Software Installation CD into the CD/DVD-ROM drive. The install instructions may vary from this document according to the windows operating system and USB dongle driver supplied by the manufacturer.
3. Click the “Click to Install” button at the prompt. If required, select the proper operating system.

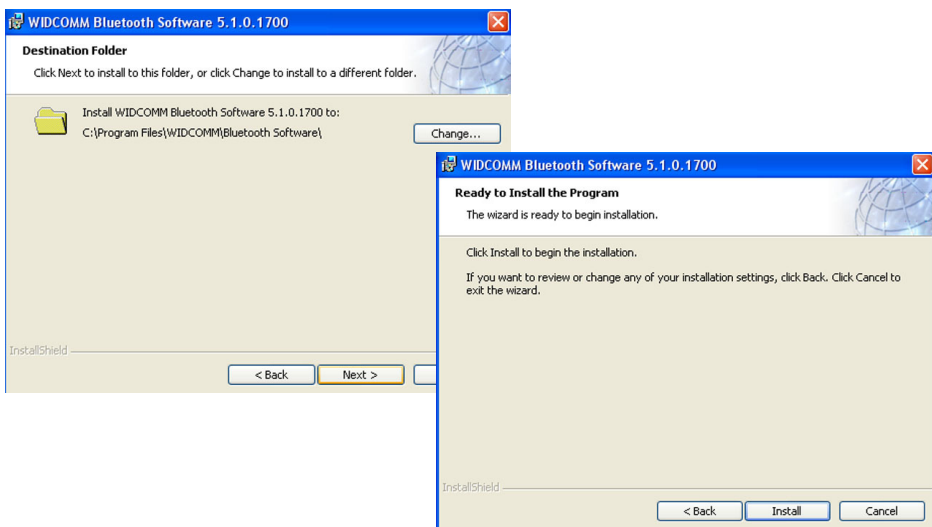


Select Proper OS

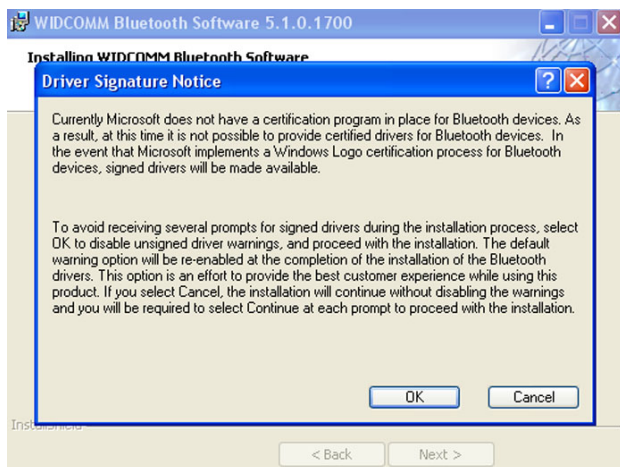
4. A “Software Installation Wizard” window appears, click on “Next” to begin the process.



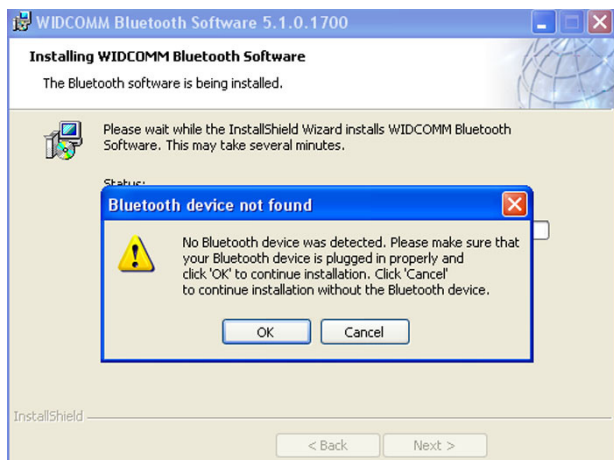
5. Within the “License Agreement” window, select “I accept the terms in the license agreement”; click on “Next”.
6. On the “Destination Folder” screen, select the location of the driver & software to be installed; click on “Next”.



- At the “Ready to Install the Program” screen, click “Install”.
- The “Installation Progress Bar” will keep updating the install process. If a “Driver Signature Notice” appears, click “OK”, to continue.



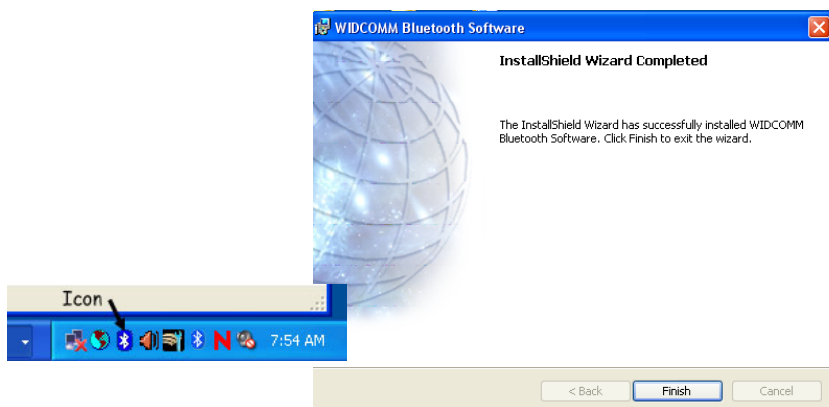
- The “Device not found” screen will appear; please insert Bluetooth USB Dongle into USB port, click “OK”, and a new USB device will be found.



10. The taskbar will indicate “**Found New Hardware**”, and files are then copied to their correct location. This will occur several times until all files are copied.



11. Click, “**Finish**” to complete the driver installation.

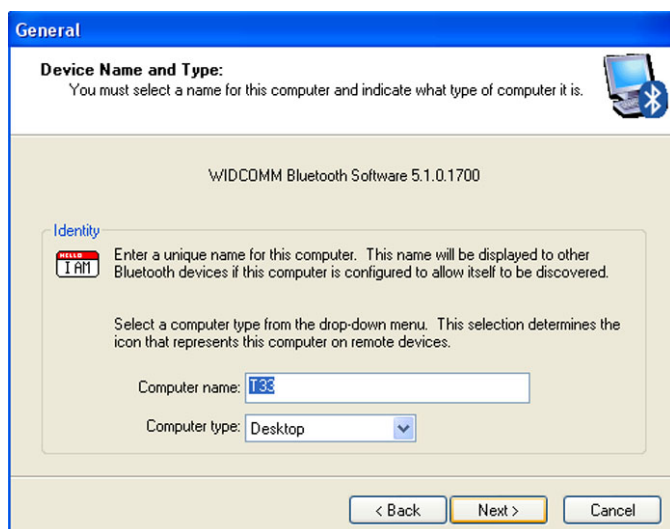


12. A “My Bluetooth Places” icon will appear on the desktop. The “My Bluetooth Places” program provides a quick and easy way to perform different application services through Bluetooth connection.
13. The “My Bluetooth Places” window may appear and try to connect to any available Bluetooth devices. This window can be closed by clicking on the “X” in the upper right hand corner.
14. The first time you use “My Bluetooth Places”, click the Bluetooth icon on windows system tray and you’ll see the “Start using Bluetooth” information.

15. The “Initial Bluetooth Configuration Wizard” appears, click on “Next”.



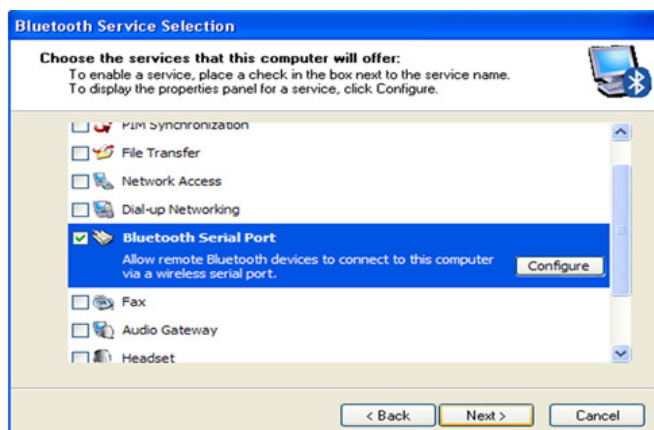
16. The “Device Information” screen appears, find out the name of the computer and select its’ type; click on “Next”.



17. The “Initial Bluetooth Configuration Wizard” appears to look for the services, click on “Next”.



18. The “Bluetooth Service Selection” screen appears, select your preferable service; click on “Next”. All other services remain unchecked. The Bluetooth serial port is the only service used by Lafayette Instrument’s products.



19. The “Initial Bluetooth Configuration Wizard” appears, click on “SKIP”.



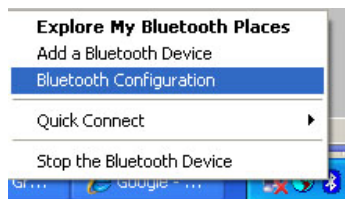
20. Press “Finish” to complete the configuration.



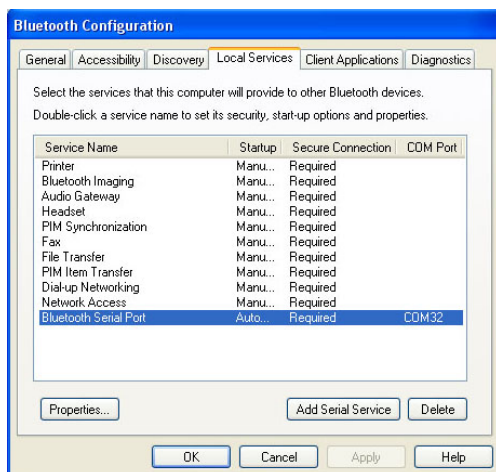
Serial Port Installation Instructions:

The Bluetooth Serial Port Service has one pre-configured Bluetooth Serial Port. One serial port connects with one Bluetooth device, therefore, to use additional Bluetooth units, additional serial ports must be added. To add a port:

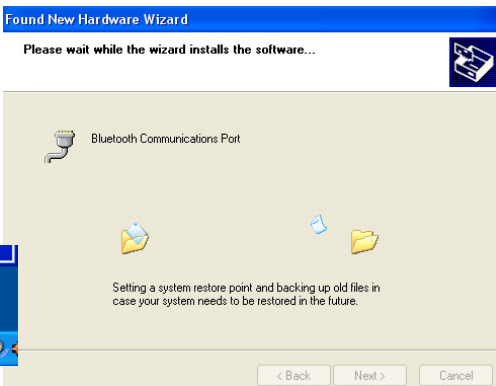
1. Right click on the Bluetooth Icon in the windows taskbar, and Select, **“Bluetooth Configuration.”**



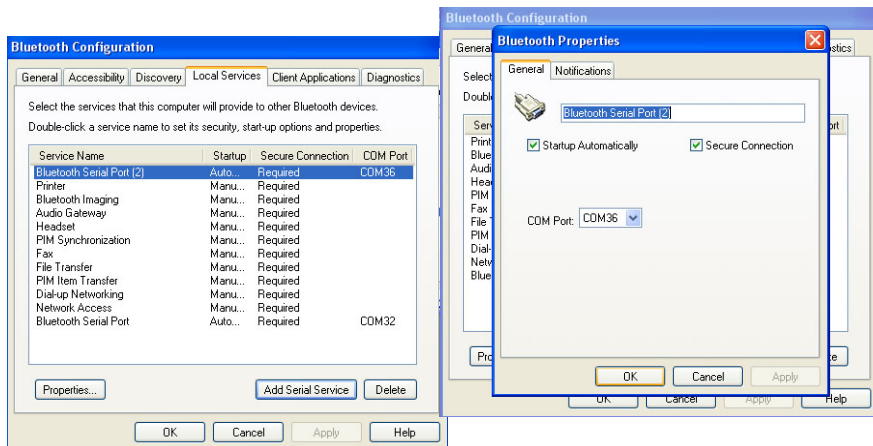
2. Select the **“Local Services Tab.”**



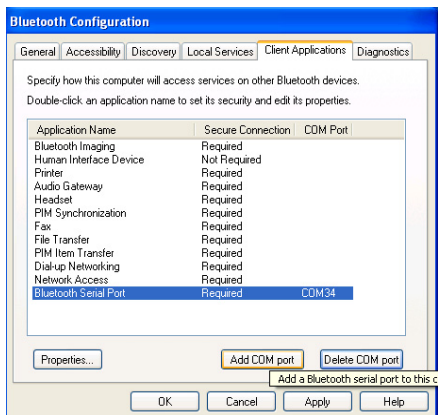
3. Click, **“Add Serial Service,”** and an additional Bluetooth serial port will automatically be added to the computer.



4. Click on the serial port service that has been added. Click the properties box, make sure both the **“Secure Connection,”** and **“Startup Automatically”** are enabled. Click **“Apply,”** and then **“OK.”**
5. There will be an additional Bluetooth Serial Port within the Bluetooth configuration window.



6. To add additional Serial Services to the computer, repeat step #3-5 for as many LX5000 Wireless devices are going to be connected to the computer. Make sure each serial port has a unique com port number.
7. After all required Bluetooth Serial ports have been added, click on the Client Applications tab within the Bluetooth Configuration window
8. Click on the Bluetooth Serial Port application name, and then click **“Add COM port”**. Click **“OK”** at the Bluetooth Properties Window and the computer will automatically add the requested COM port to the table.
9. Repeat step 8 for as many LX5000 wireless devices are going to be connected to the computer.
10. After all COM ports have been added, click **“Apply”**, then **“OK”** to close the Bluetooth Configuration window.

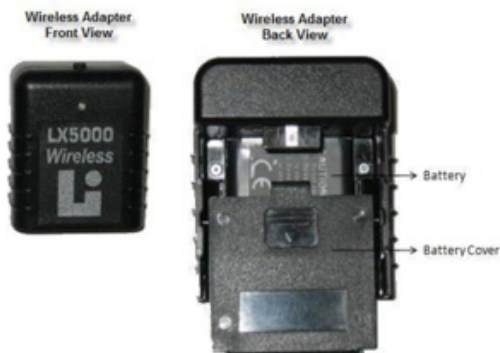


LX5000 Wireless DAS module installation instructions

1. Prior to installing a wireless module, make sure that LX software ver.10.0 or greater is installed on the computer, and the Bluetooth® USB Dongle software has also been successfully installed.
2. Insert the Bluetooth USB Dongle into its USB port. It is recommended to always insert the Dongle into the same USB port location on the computer. The Bluetooth icon in the taskbar will change colors from Red to White.



3. Locate a wireless adapter and place a fully charged battery into the battery compartment with its correct polarity.



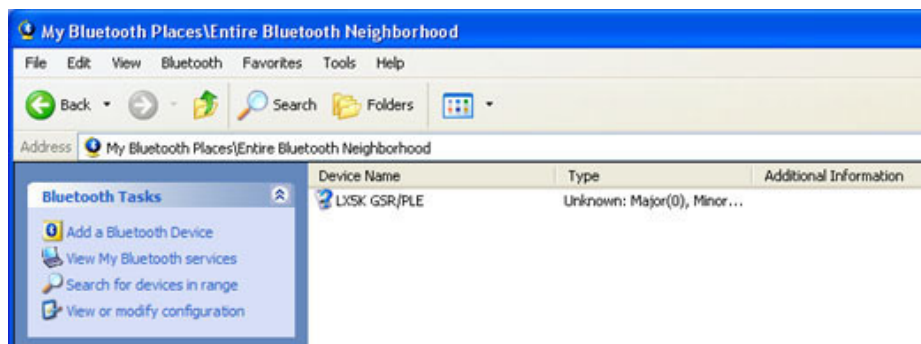
4. Slip the wireless adapter over the DAS module until it clicks into place.



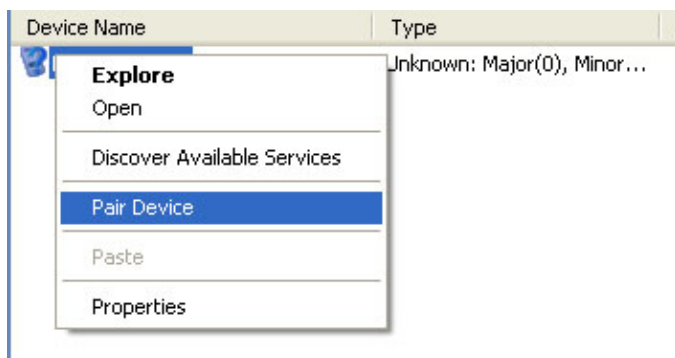
5. Turn the adapter on by pressing the power button until the power status LED flashes red then green, and then the LED will turn off. Once the adapter has been turned on, the installation must be completed and the LX software must start acquiring data within five minutes. If five minutes expire before installation is complete, turn the device on again, and proceed.
6. Your device is now ready to be paired to the host computer.

*This is a one time process. Once paired to the host computer, no other computer can be paired simultaneously.
7. Locate the Bluetooth icon in the Windows taskbar.

8. Right click on the Bluetooth icon, and click on **“Explore My Bluetooth Places”**. The software will automatically search and display any Bluetooth devices that are within its range. If it does not automatically search, double click on **“Find Bluetooth Devices”** within the Bluetooth Tasks window.



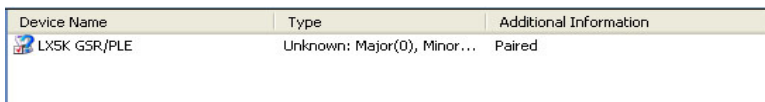
9. Right click on the device name and then left click on **“Pair Device”**.



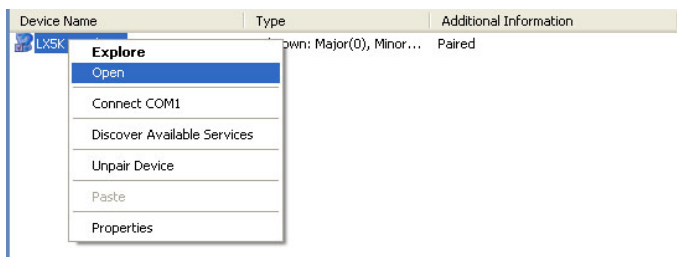
10. At the “Bluetooth Security Code Request” window, type in the default security code 0000, then click “OK”.



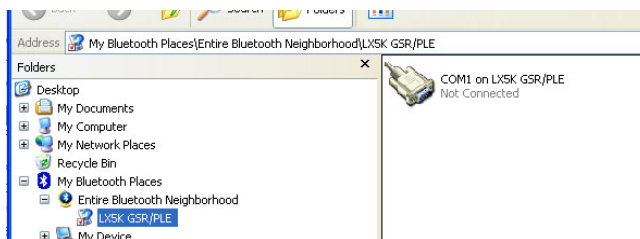
11. The device will become paired to the computer.



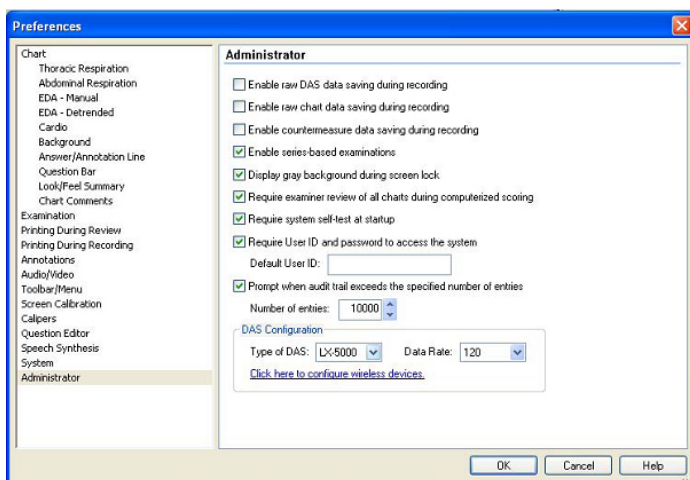
12. Right click on the device name again and select “Open”.



13. A new window will open, showing the device that is being connected.



14. Right click on the “COM1 on LX5K...”, and select Connect to Bluetooth Serial Port.
15. Click “OK” to accept the connection.
16. The device is now securely connected to the computer.
17. Minimize the My Bluetooth Places window.
18. Launch the LX software, and go to **Tools > Preferences**.
19. Select the **LX5000** as the “Type of DAS” in the administrator Preferences window.



20. Select the “Configure Wireless Devices” window.



21. Select **Yes** to enable wireless support (wireless config only needs to be done once).

22. Select Search to search for the wireless DAS sensors.

23. All available sensors that are currently powered on and paired to the computer will appear in the Device box. If they do not appear, verify that the sensors are turned on and have been paired by selecting “**Device Manager.**” Select “**Bluetooth Devices**” to check.



24. If the correct module or modules are identified in the “Configure Wireless Devices window,” select **Save** to save the changes. Select cancel to discard the changes.
25. The LXSoftware will open and tracings will appear on the screen.

Note:

A Devices menu has been added to LXSoftware to perform a restart of all devices, to configure wireless devices, and to check the LX5000 module battery levels. If LXSoftware is open, and previously paired wireless devices are not connected, perform the following steps.

1. Insert a charged battery into each wireless adapter.
2. Connect a DAS module to each wireless adapter.
3. Turn on the wireless module by pressing the power button.
4. Click on **“Restart all Wireless Devices.”**
5. Tracings shall appear within the LXSoftware.

Note:

To start a wireless system after steps 1-25 have been completed, and the device has been saved within the LXsoftware wireless device window, perform the following steps.

1. Insert a charged battery in to each wireless adapter.
2. Connect a DAS module to each wireless adapter.
3. Turn on the wireless module by pressing the power button.
4. Open LXsoftware. Tracings shall appear within the LXSoftware.

Terms and Conditions:

LIC Worldwide Headquarters

Toll-Free: (800) 428-7545 (USA only)

Phone: (765) 423-1505

Fax: (765) 423-4111

Email: sales@lafayetteinstrument.com

export@lafayetteinstrument.com (Outside the USA)

Mailing Address:

Lafayette Instrument Company

PO Box 5729

Lafayette, IN 47903, USA

Lafayette Instrument Europe:

Phone: +44 1509 817700

Fax: +44 1509 817701

Email: esusales@lafayetteinstrument.com

Phone, Fax, Email or Mail-in Orders

All orders need to be accompanied by a hard copy of your order. All must include the following information:

- Quantity
- Part Number
- Description
- Your purchase order number or method of pre-payment
- Your tax status (include tax-exempt numbers)
- Shipping address for this order
- Billing address for the invoice we'll mail when this order is shipped
- Signature and typed name of person authorized to order these products
- Your telephone number
- Your email address
- Your FAX number

Domestic Terms

There is a \$50 minimum order. Open accounts can be extended to most recognized educational institutions, hospitals and government agencies. Net amount due 30 days from the date of shipment unless otherwise specified by us. Enclose payment with the order; charge with VISA, MasterCard, American Express, or pay COD. We must have a hard copy of your purchase order by mail, E-mail or fax. Students, individuals and private companies may call for a credit application.

International Payment Information

There is a \$50 minimum order. Payment must be made in advance by: draft drawn on a major US bank; wire transfers to our account; charge with VISA, MasterCard, American Express, or confirmed irrevocable letter of credit. Proforma invoices will be provided upon request.

Exports

If ordering instrumentation for use outside the USA, please specify the country of ultimate destination, as well as the power requirements (110V/60Hz or 220V/50Hz). Model numbers for 220V/50Hz will have a "C" suffix.

Quotations

Quotations are supplied upon request. Written quotations will include the price of goods, cost of shipping and handling, if requested, and estimated delivery time frame. Quotations are good for 30 days, unless otherwise noted. Following that time, prices are subject to change and will be re-quoted at your request.

Cancellations

Orders for custom products, custom assemblies or instruments built to customer specifications will be subject to a cancellation penalty of 100%. Payment for up to 100% of the invoice value of custom products may be required in advance. Cancellation for a standard Lafayette Instrument manufactured product once the product has been shipped will normally be assessed a charge of 25% of the invoice value, plus shipping charges. Resell items, like custom products, will be subject to a cancellation penalty of 100%.

Exchanges and Refunds

Please see the cancellation penalty as described above. No item may be returned without prior authorization of Lafayette Instrument Company and a Return Goods Authorization (RGA#) number which must be affixed to the shipping label of the returned goods. The merchandise should be packed well, insured for the full value and returned along with a cover letter explaining the reason for return. Unopened merchandise may be returned prepaid within thirty (30) days after receipt of the item and in the original shipping carton. Collect shipments will not be accepted. Product must be returned in saleable condition, and credit is subject to inspection of the merchandise.

Repairs

Instrumentation may not be returned without first receiving a Return Goods Authorization Number (RGA). When returning instrumentation for service, please call Lafayette Instrument to receive a RGA number. Your RGA number will be

good for 30 days. Address the shipment to:

Lafayette Instrument Company

3700 Sagamore Parkway North

Lafayette, IN 47904, USA.

Shipments cannot be received at the PO Box. The items should be packed well, insured for full value, and returned along with a cover letter explaining the malfunction. Please also state the name of the Lafayette Instrument representative authorizing the return. An estimate of repair will be given prior to completion ONLY if requested in your enclosed cover letter. We must have a hard copy of your purchase order by mail or fax, or repair work cannot commence for non-warranty repairs.

Damaged Goods

Damaged instrumentation should not be returned to Lafayette Instrument prior to a thorough inspection. When a shipment arrives damaged, note damage on delivery bill and have the driver sign it to acknowledge the damage. Contact the delivery service, and they will file an insurance claim. When damage is not detected at the time of delivery, contact the carrier and request an inspection within 10 days of the original delivery. Please call the Lafayette Instrument Customer Service Department for repair or replacement of the damaged merchandise.

Limited Warranty

Lafayette Instrument Company warrants equipment manufactured by the company to be free of defects in material and workmanship for a period of one year from the date of shipment, except as provided hereinafter. The original manufacturer's warranty will be honored by Lafayette Instrument for items not manufactured by Lafayette Instrument Company, i.e. resell items. This assumes normal usage under commonly accepted operating parameters and excludes consumable products.

Warranty period for repairs or used instrumentation purchased from Lafayette Instrument is 90 days. Lafayette Instrument Company agrees either to repair or replace, at its sole option and free of part charges to the customer, instrumentation which, under proper and normal conditions of use, proves to be defective within the warranty period. Warranty for any parts of such repaired or replaced instrumentation shall be covered under the same limited warranty and shall have a warranty period of 90 days from the date of shipment or the remainder of the original warranty period whichever is greater. This warranty and remedy are given expressly and in lieu of all other warranties, expressed or implied, of merchantability or fitness for a particular purpose and constitutes the only warranty made by Lafayette Instrument Company.

Lafayette Instrument Company neither assumes nor authorizes any person to assume for it any other liability in connection with the sale, installation, service or use of its instrumentation. Lafayette Instrument Company shall have no liability whatsoever for special, consequential, or punitive damages of any kind from any cause arising out of the sale, installation, service or use of its instrumentation. All products manufactured by Lafayette Instrument Company are tested and inspected prior to shipment. Upon prompt notification by the Customer, Lafayette Instrument Company will correct any defect in warranted equipment of its manufacture either, at its option, by return of the item to the factory, or shipment of a repaired or replacement part. Lafayette Instrument Company will not be obliged, however, to replace or repair any piece of equipment which has been abused, improperly installed, altered, damaged, or repaired by others. Defects in equipment do not include decomposition, wear, or damage by chemical action or corrosion, or damage incurred during shipment.

Limited Obligations Covered by this Warranty

1. In the case of instruments not of Lafayette Instrument Company manufacture, the original manufacturer's warranty applies.
2. Shipping charges under warranty are covered only in one direction. The customer is responsible for shipping charges to the factory if return of the part is required.
3. This warranty does not cover damage to components due to improper installation by the customer.
4. Consumable and/or expendable items, including but not limited to electrodes, lights, batteries, fuses, O-rings, gaskets, and tubing, are excluded from warranty.
7. Failure by the customer to perform normal and reasonable maintenance on instruments will void warranty claims.
8. If the original invoice for the instrument is issued to a company which is not the company of the end user, and not an authorized Lafayette Instrument Company distributor, then all requests for warranty must be processed through the company which sold the product to the end user, and not directly to Lafayette Instrument Company.

Export License

The U.S. Department of Commerce requires an export license for any polygraph system shipment with an ULTIMATE destination other than: Australia, Japan, New Zealand or any NATO Member Countries. It is against U.S. law to ship a Polygraph system to any other country without an export license. If the ultimate destination is not one of the above listed countries, contact us for the required license application forms.

LX5000 Wireless DAS module and Bluetooth® USB Dongle

Setup Instructions



3700 Sagamore Parkway North
P.O. Box 5729 • Lafayette, IN 47903 USA
Tel: 765.423.1505 • 800.428.7545
Fax: 765.423.4111
E-mail: info@lafayetteinstrument.com
www.lafayetteinstrument.com